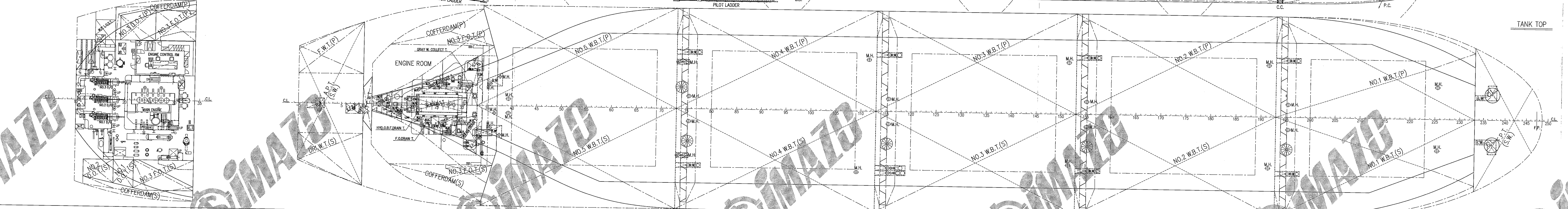
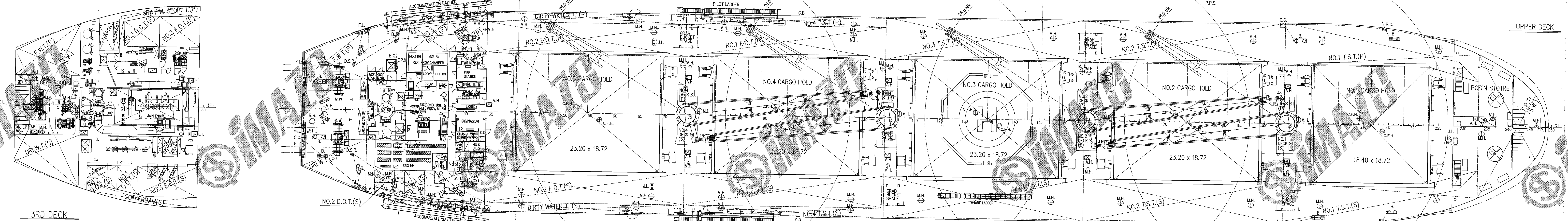
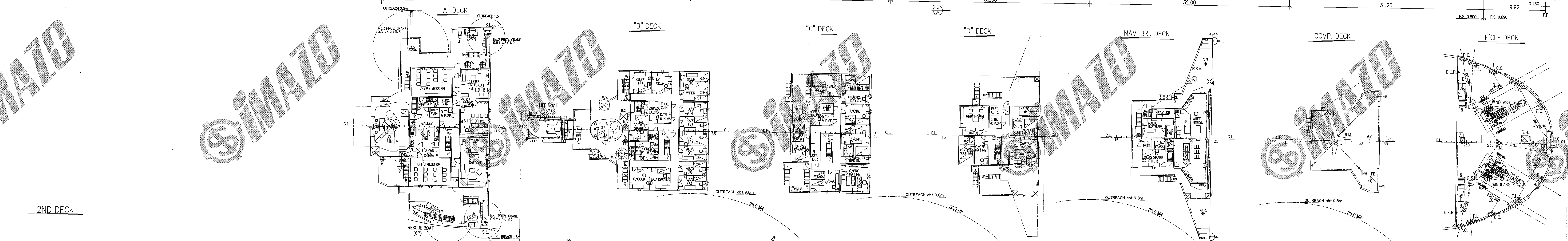
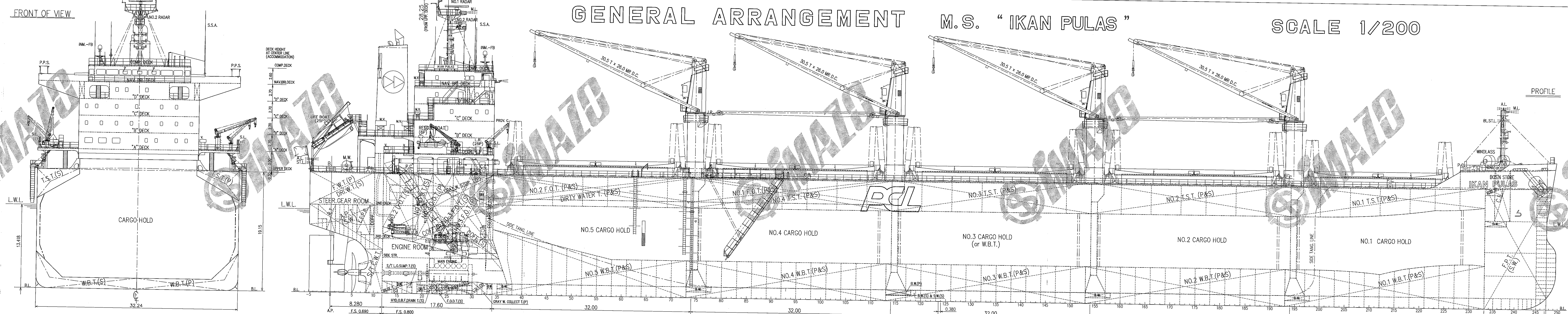


GENERAL ARRANGEMENT M.S. "IKAN PULAS"

SCALE 1/200

HISTORY
DRAWN BY THIS WORKS.
DATE: June 17, 2016



PRINCIPAL PARTICULARS

LENGTH (O.A.)	199.98 m
LENGTH (B.P.)	195.00 m
BREADTH (M.D.)	32.24 m
DEPTH (M.D.)	19.15 m
DRAUGHT (at SUMMER EXTREME)	13.418 m
DEADWEIGHT (at ASSIGNED DRAUGHT)	63,520 M.T.
GROSS TONNAGE (I.C.T.M.)	33,820
NET TONNAGE (I.C.T.M.)	21,075
MAIN ENGINE	MAN B&W S50ME-RP 3 1 SET
HATCH - MAN B&W S50ME-RP 3	MAXIMUM CONTINUOUS RATING 7,560 kW x 99.0 min ⁻¹
NORMAL OUTPUT RATING	6,425 kW x 93.8 min ⁻¹ (85% M.C.S.)
SERVICE SPEED (NORMAL OUTPUT RATING, ON DESGN. D., 15% S.M.)	abt. 14.5 knots
TRIAL MAX. SPEED	15.673 knots

CLASS: ABS
CLASSIFICATION NOTATION: HULL: Bulk Carrier; BC-A (Holds 2 and 4 may be empty), (E), +AMS, +ACCU GRAB [20], CSR, AB-CM, GP, PMA, ESP, CFS, CRC, RW, BWI

STRENGTH

TANK TOP (UNIFORM LOAD)	
No.1 C.H.	: 24.16 MT/M ²
No.2 C.H.	: 18.40 MT/M ²
No.3 C.H.	: 24.34 MT/M ²
No.4 C.H.	: 18.40 MT/M ²
No.5 C.H.	: 24.36 MT/M ²
UPPER DECK (WEATHER LOAD)(EXCLUDING CROSS DECK)	
UPPER DECK	: 3.1 MT/M ²
HATCH COVER (WEATHER LOAD)	
No.1 ~ No.5	: 2.2 MT/M ²

COMPLEMENT

DECK PART	ENGINE PART	BUSINESS PART	
CAPTAIN	1	CHIEF ENGINEER	1
CHIEF OFFICER	1	1ST ENGINEER	1
2ND OFFICER	1	2ND ENGINEER	1
3RD OFFICER	1	3RD ENGINEER	1
BOATSWAIN	1	NO.1 OILER	1
ABLE SEAMAN	3	QUEER	2
CROCKERY SEAMAN	1	MESS MAN	1
WIPER	1		
TOTAL NUMBER OF OFFICER			8 P.
TOTAL NUMBER OF CREW			13 P.
OFFICER'S SPARE (JUNIOR OFFICER CLASS)			2 P.
OFFICER'S SPARE (PILOT/JUNIOR OFFICER CLASS)			1 P.
CREW'S SPARE (RATING CREW CLASS)			1 P.
GRAND TOTAL			25 P.

CAUTION
THIS DRAWING OR DOCUMENT IS THE PROPERTY OF MABARI SHIPBUILDING CO., LTD. REPRODUCTION, COPYING, UTILIZATION FOR PURPOSES OTHER THAN AGREED, DISCLOSURE TO A THIRD PARTY, ARE STRICTLY SUBJECT TO PRIOR WRITTEN AGREEMENT BY MABARI SHIPBUILDING CO., LTD.

FINISHED PLAN
BASIC DESIGN GROUP
BASIC DESIGN TEAM

APPROVED: [Signature]
CHECKED: [Signature]
DRAWN: [Signature]

SHIP NO. S-K075 CLASS ABS SCALE 1/200 SHEET NO. C-0200

M.S. "IKAN PULAS" NO.974355 GENERAL ARRANGEMENT
MABARI SHIPBUILDING CO., LTD. SHIN KASAGO DOCK YARD CO., LTD. DATE: June 17, 2016