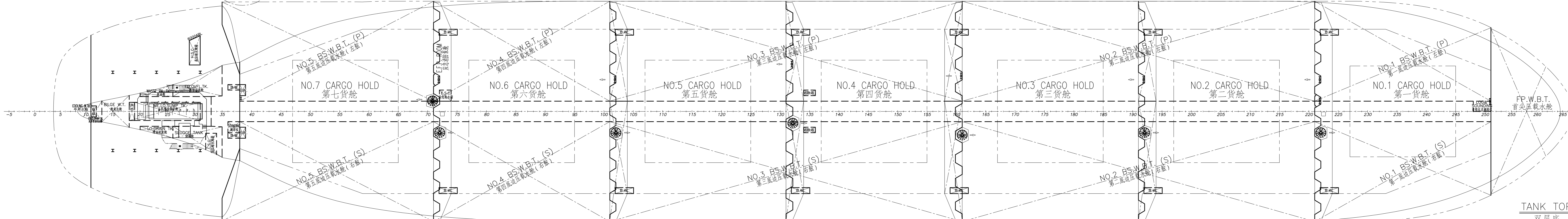
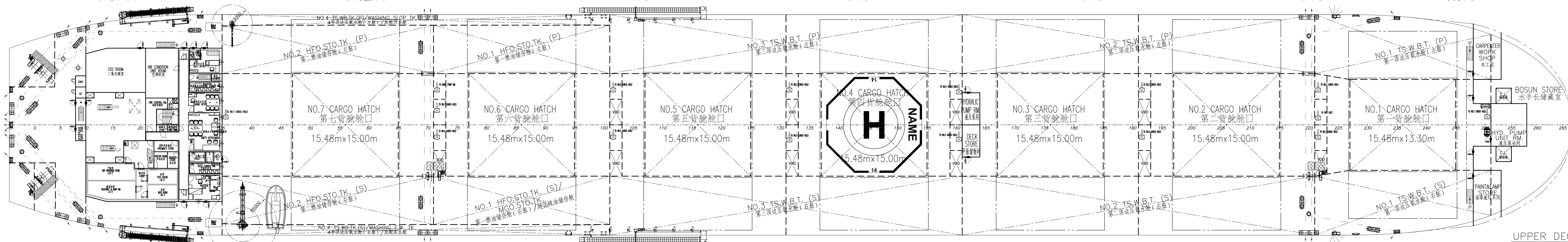
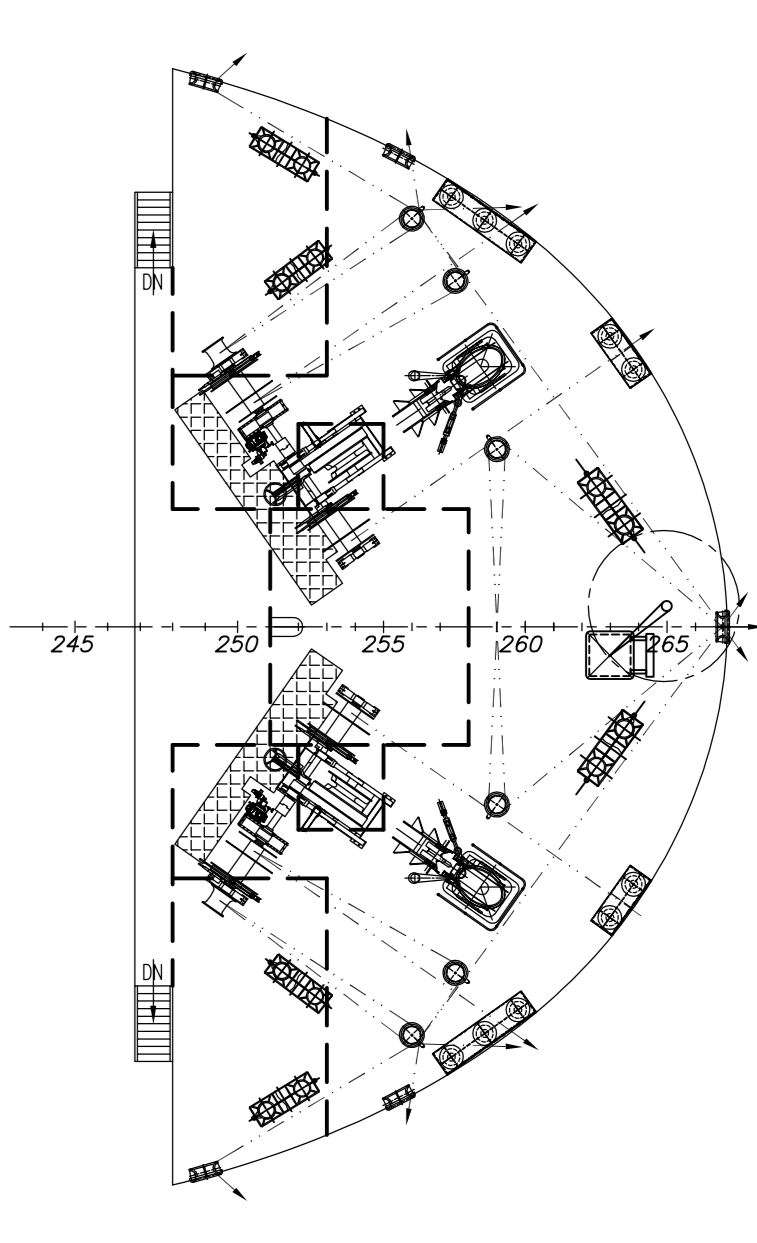
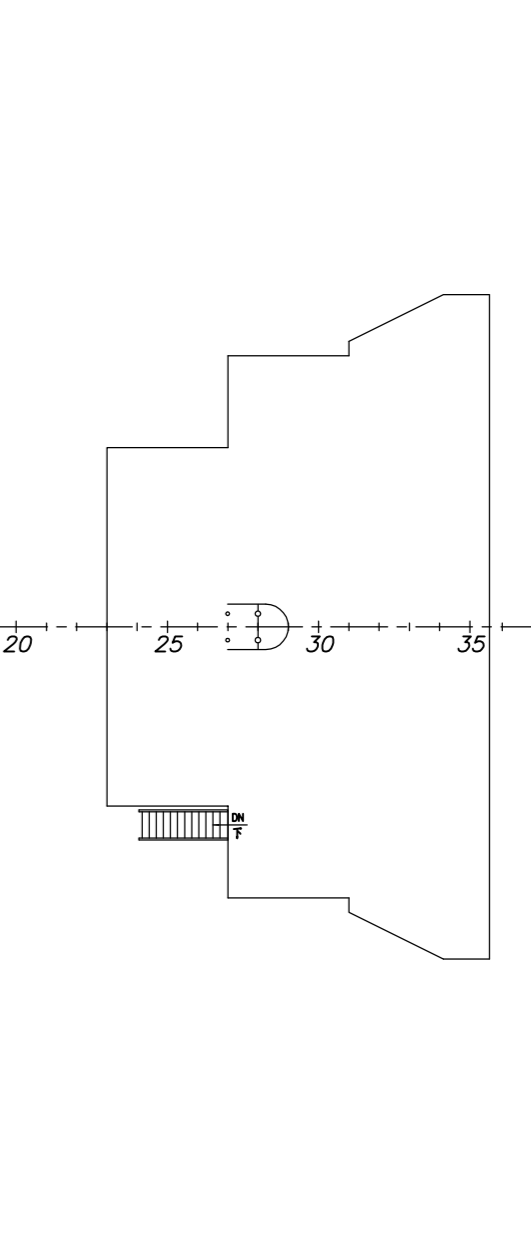
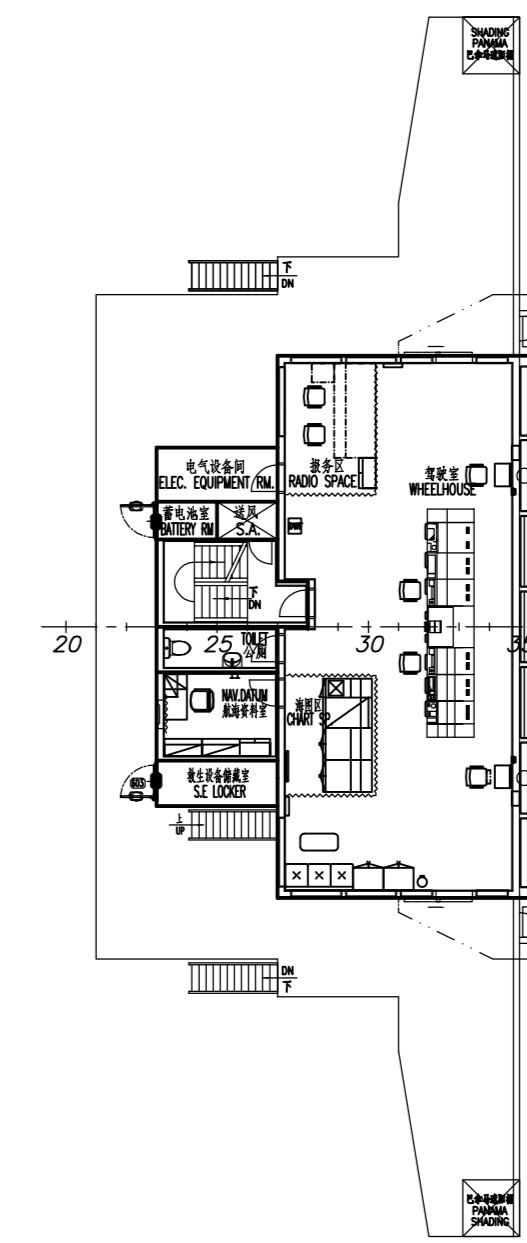
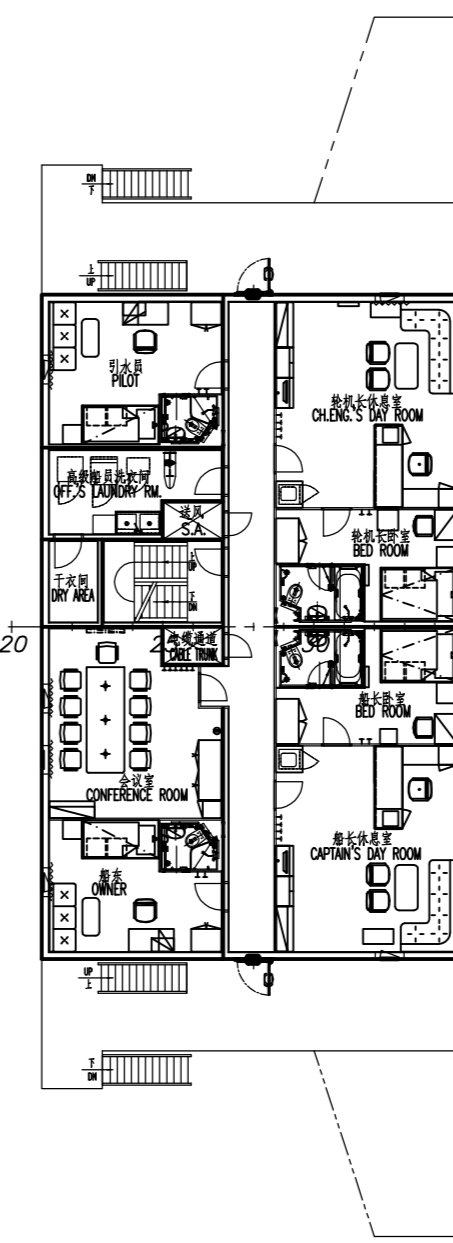
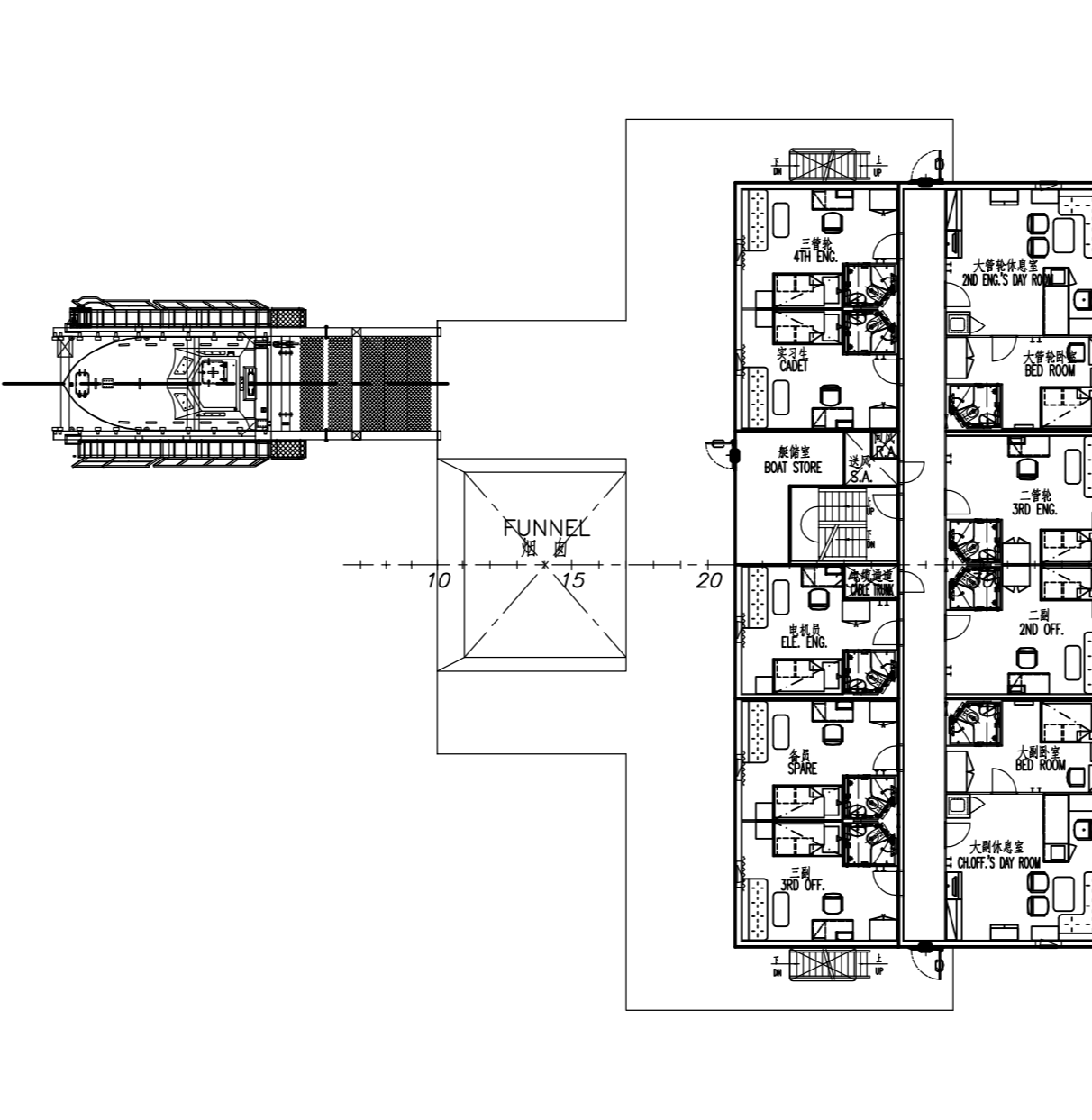
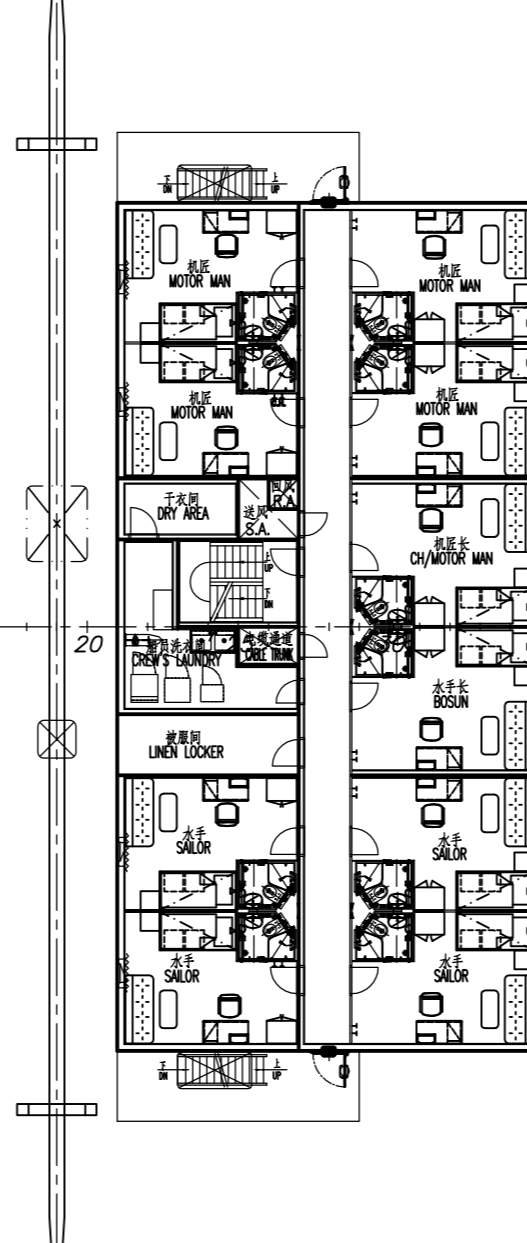
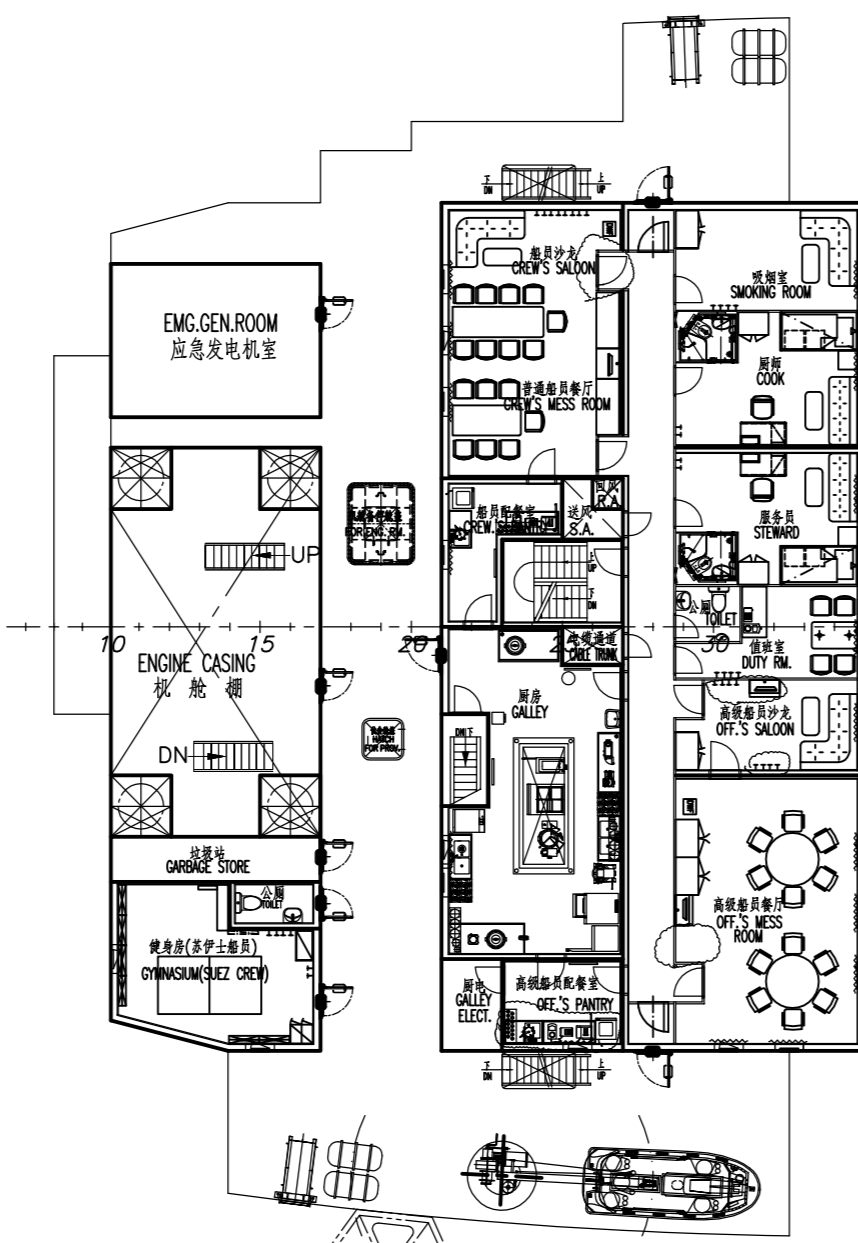
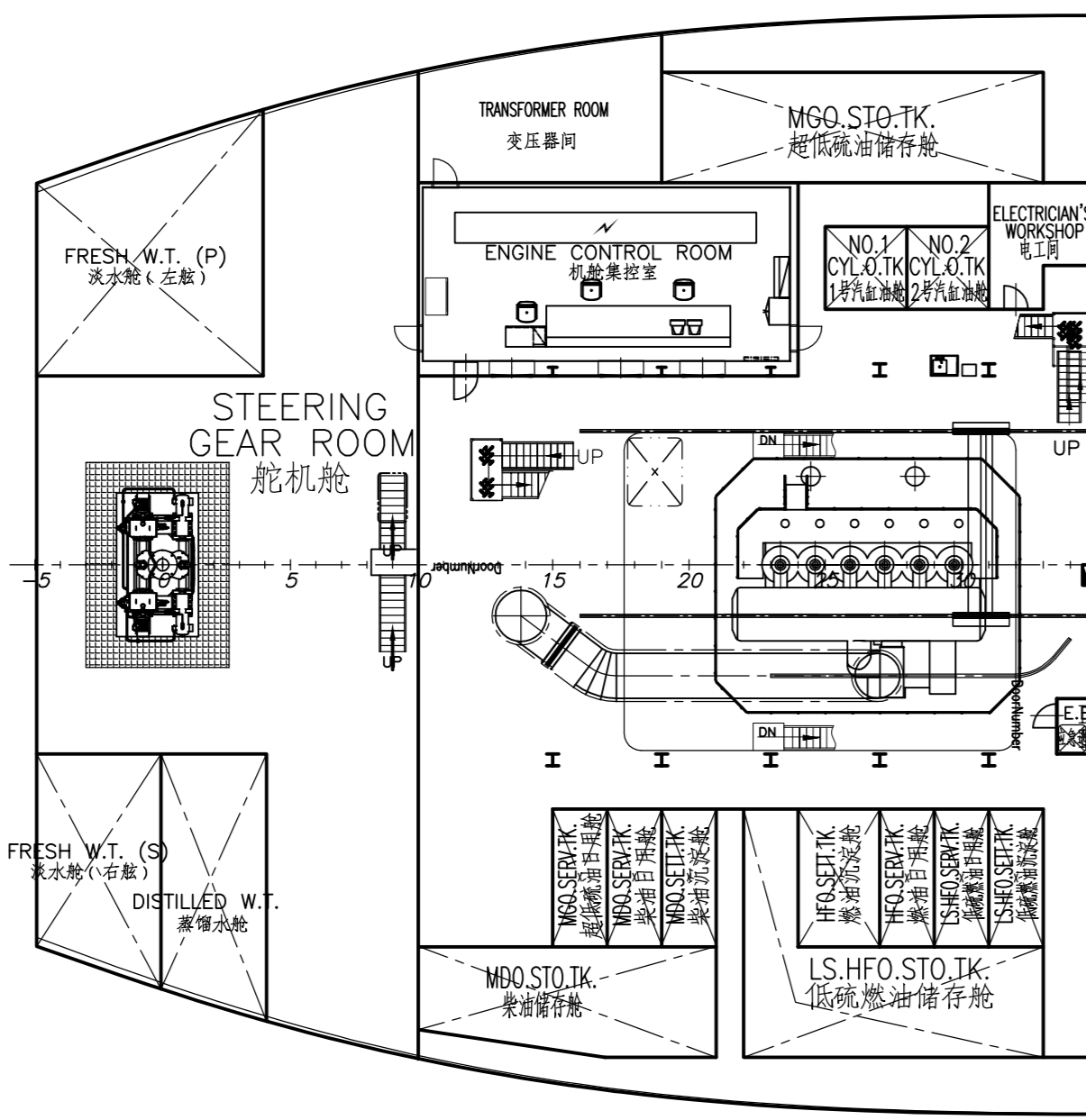
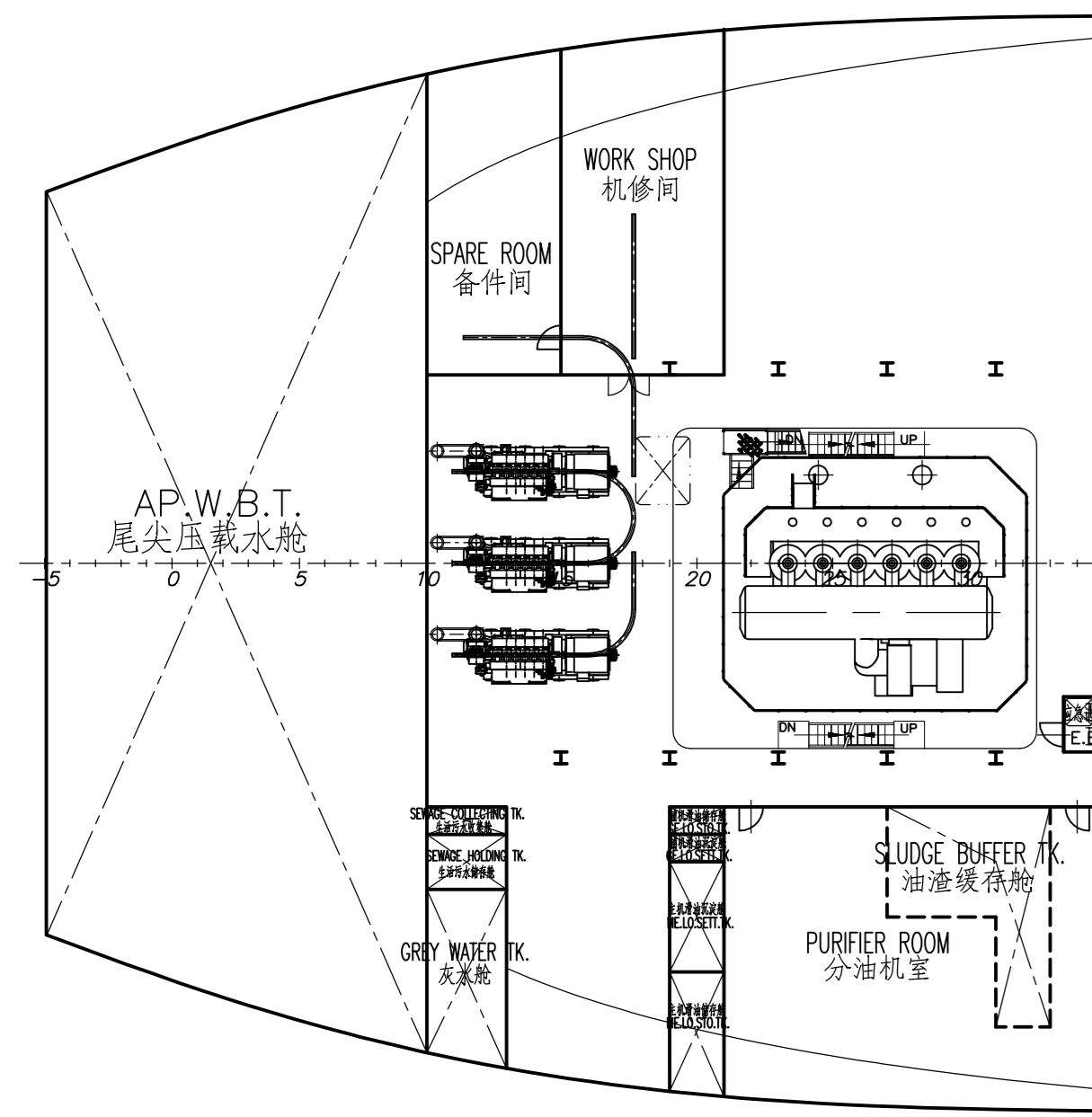
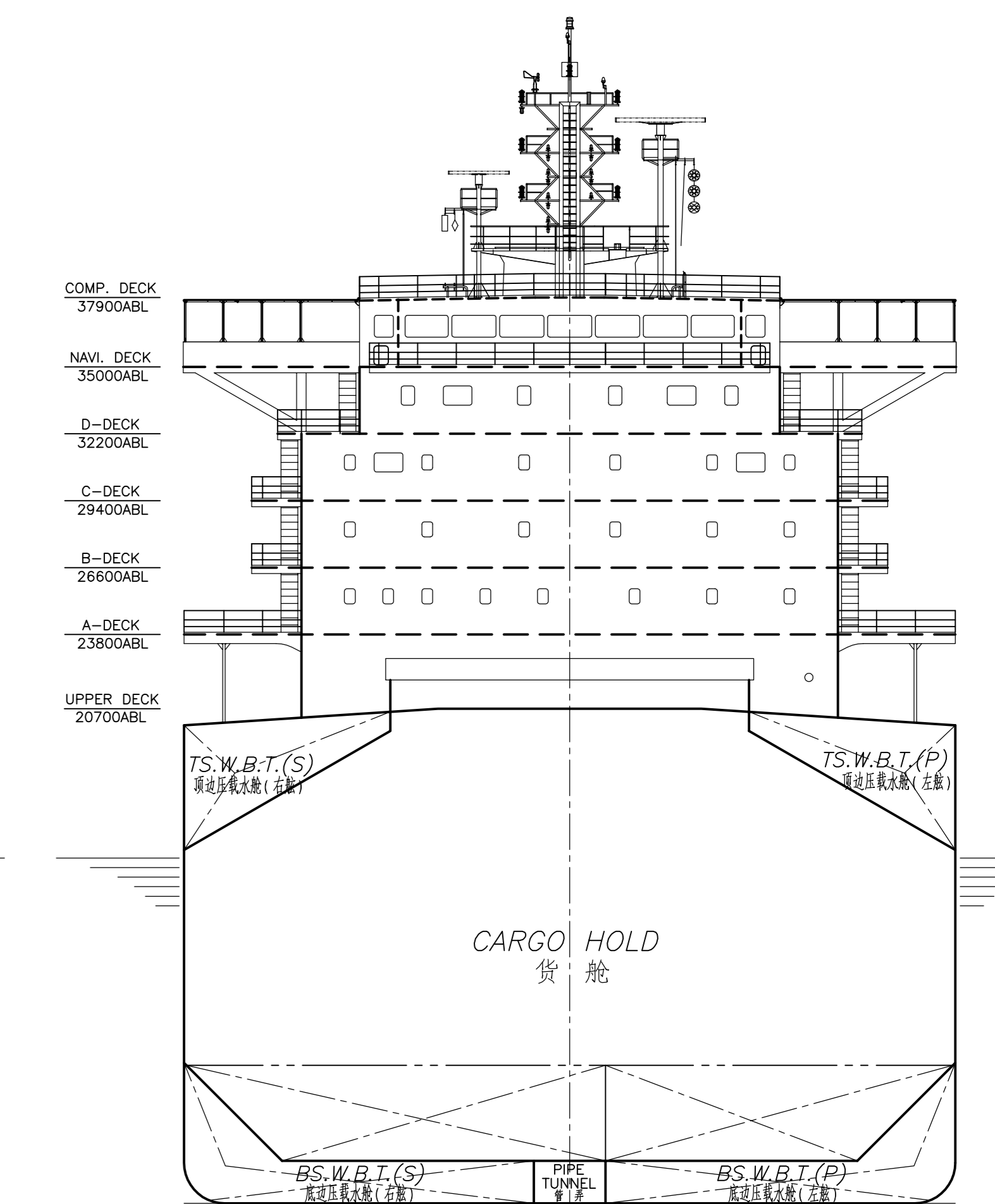
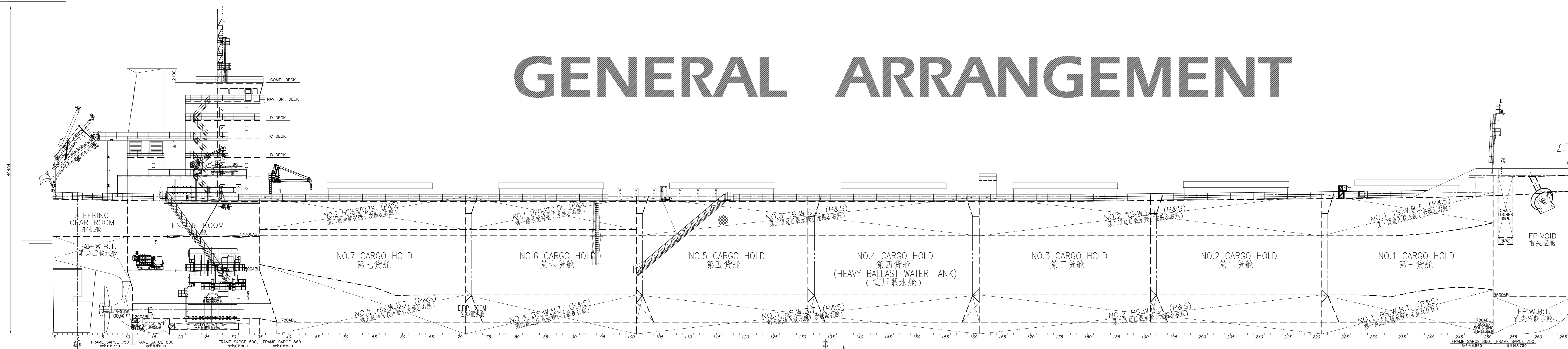


GENERAL ARRANGEMENT



MAIN PARTICULARS:
(主要参数)

LENGTH OVER ALL (总长)	229.00 m
LENGTH BETWEEN PERPENDICULARS (垂线间长)	225.30 m
BREADTH MOULDED (型宽)	32.26 m
DEPTH MOULDED (型深)	20.00 m
DESIGN DRAUGHT (设计吃水)	12.20 m
SCANTLING DRAUGHT (结构吃水)	14.45 m
DEADWEIGHT AT DESIGN DRAFT (设计吃水时的载重量)	abt. 65,800 t
DEADWEIGHT AT SCANTLING DRAFT (结构吃水时的载重量)	abt. 82,000 t
CARGO HOLD CAPACITY (货舱容积)	abt. 97,300 m ³
COMPLEMENT (船员定额)	24P+1
MAIN ENGINE (主机型号)	MAN B&W 6S60ME-C8.2-TII
ENGINE OUTPUT(SMCR) (主机额定最大持续功率)	9,801kW x 90.3rpm
ENGINE OUTPUT(NCR) (主机常用持续功率)	7,448kW x 82.4rpm
SERVICE SPEED (服务航速)	14.3 knots
(at design draught 12.20m, NCR with 15% sea margin) (设计吃水12.20米时, 主机为常用持续功率NCR, 考虑15%的浪高裕度)	
ENDURANCE (续航力)	22,000 NM
CLASSIFICATION NOTATION (入级符号) ABS +A1 (E) Bulk Carrier, CSR, CPS, BC-A [Holds 2, 4, and 6 may be empty], Grab[20] . AB-CM, ESP, UWILD, +AMS, +ACCU, TCM, BWT	